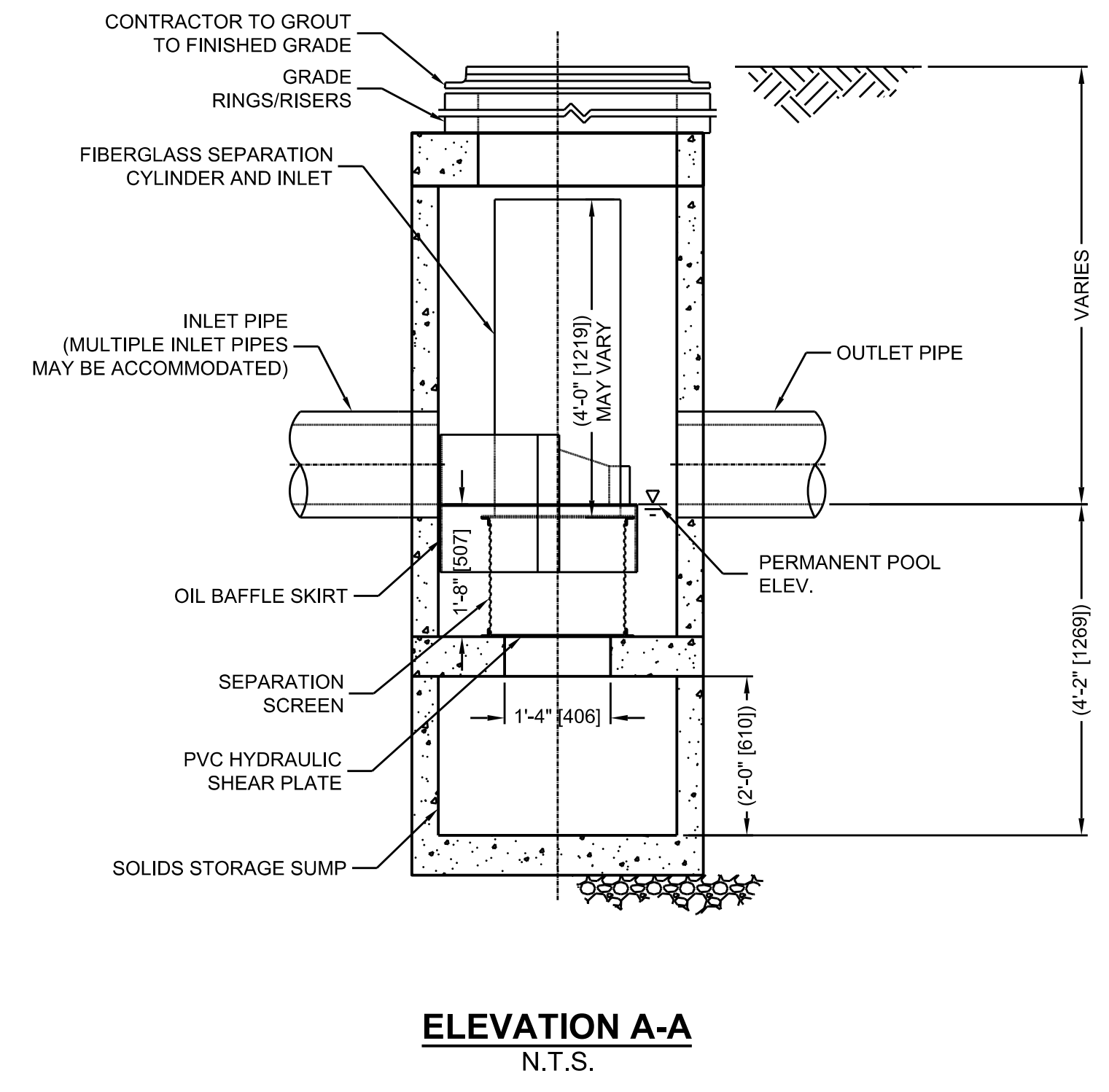
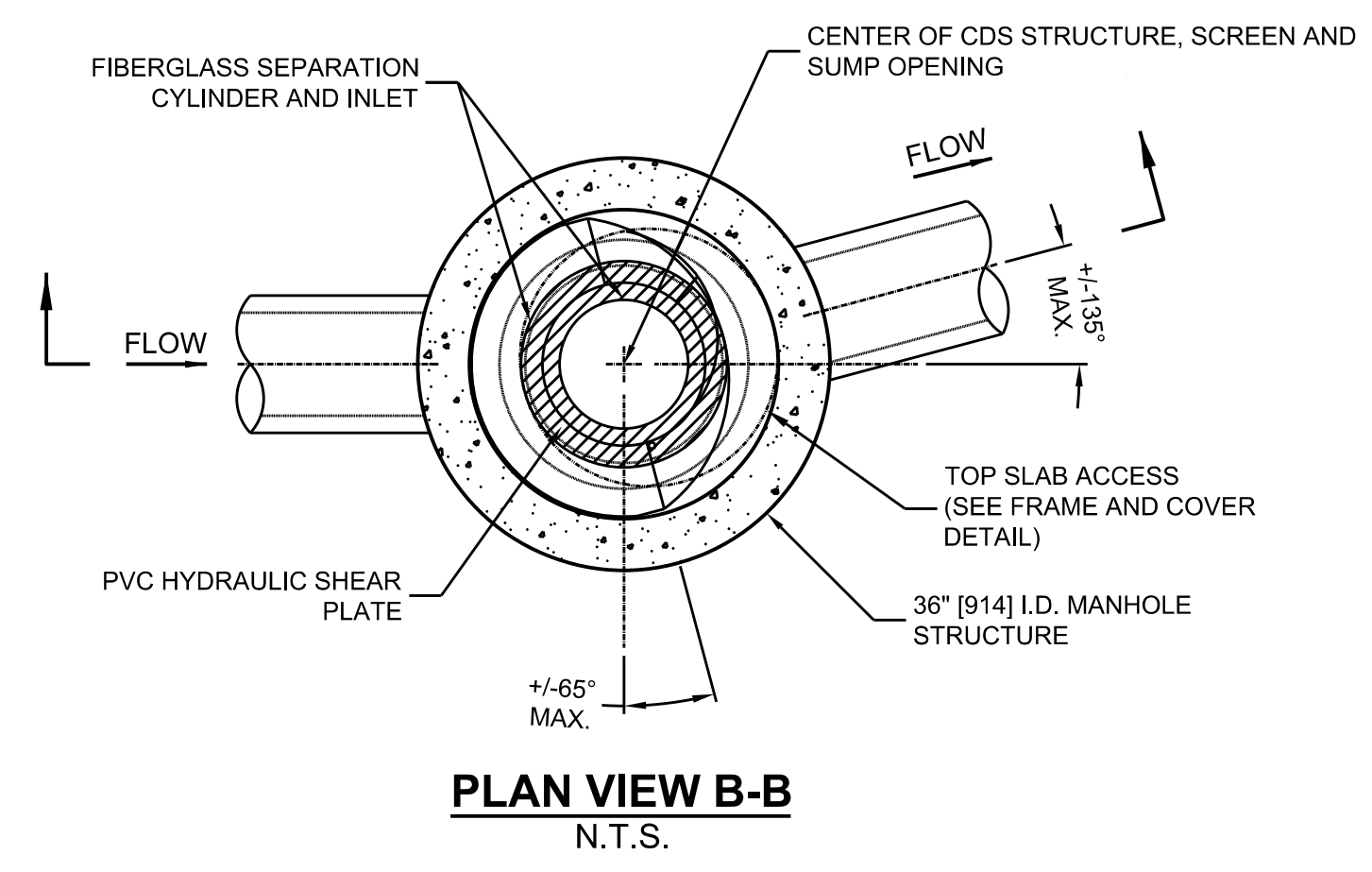
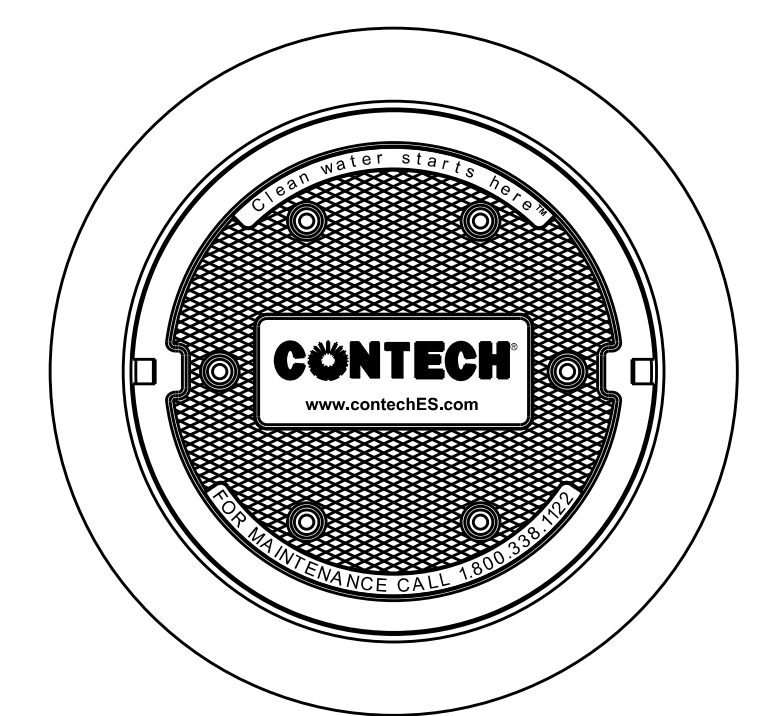


I:\STORMWATER\URSDIR\CONSTRUCTION\ANNAVAI_SDE DESIGN TOOLS_STANDARD DETAILS\CDS\CDS1515-3-C-DTL.DWG 9/6/2018 4:16 PM



CDS1515-3-C DESIGN NOTES

CDS1515-3-C RATED TREATMENT CAPACITY IS 1.0 CFS, OR PER LOCAL REGULATIONS.
THE STANDARD CDS1515-3-C CONFIGURATION IS SHOWN.



SITE SPECIFIC DATA REQUIREMENTS			
STRUCTURE ID	WQS #1		
WATER QUALITY FLOW RATE (CFS OR L/s)	0.34 cfs		
PEAK FLOW RATE (CFS OR L/s)	1 cfs		
RETURN PERIOD OF PEAK FLOW (YRS)	25		
SCREEN APERTURE (2400 OR 4700)	4700		
PIPE DATA:	I.E.	MATERIAL	DIAMETER
INLET PIPE 1	6.44	HDPE	12"
INLET PIPE 2	6.44	HDPE	12"
OUTLET PIPE	6.44	HDPE	12"
RIM ELEVATION	9.7		
ANTI-FLOTATION BALLAST	WIDTH	HEIGHT	
	*	*	
NOTES/SPECIAL REQUIREMENTS:			
* PER ENGINEER OF RECORD			

- GENERAL NOTES**
- CONTECH TO PROVIDE ALL MATERIALS UNLESS NOTED OTHERWISE.
 - FOR SITE SPECIFIC DRAWINGS WITH DETAILED STRUCTURE DIMENSIONS AND WEIGHT, PLEASE CONTACT YOUR CONTECH ENGINEERED SOLUTIONS LLC REPRESENTATIVE. www.ContechES.com
 - CDS WATER QUALITY STRUCTURE SHALL BE IN ACCORDANCE WITH ALL DESIGN DATA AND INFORMATION CONTAINED IN THIS DRAWING. CONTRACTOR TO CONFIRM STRUCTURE MEETS REQUIREMENTS OF PROJECT.
 - STRUCTURE SHALL MEET AASHTO HS20 LOAD RATING, ASSUMING EARTH COVER OF 0' - 2', AND GROUNDWATER ELEVATION AT, OR BELOW, THE OUTLET PIPE INVERT ELEVATION. ENGINEER OF RECORD TO CONFIRM ACTUAL GROUNDWATER ELEVATION. CASTINGS SHALL MEET AASHTO M306 AND BE CAST WITH THE CONTECH LOGO.
 - IF REQUIRED, PVC HYDRAULIC SHEAR PLATE IS PLACED ON SHELF AT BOTTOM OF SCREEN CYLINDER. REMOVE AND REPLACE AS NECESSARY DURING MAINTENANCE CLEANING.
 - CDS STRUCTURE SHALL BE PRECAST CONCRETE CONFORMING TO ASTM C-478 AND AASHTO LOAD FACTOR DESIGN METHOD.
- INSTALLATION NOTES**
- ANY SUB-BASE, BACKFILL DEPTH, AND/OR ANTI-FLOTATION PROVISIONS ARE SITE-SPECIFIC DESIGN CONSIDERATIONS AND SHALL BE SPECIFIED BY ENGINEER OF RECORD.
 - CONTRACTOR TO PROVIDE EQUIPMENT WITH SUFFICIENT LIFTING AND REACH CAPACITY TO LIFT AND SET THE CDS MANHOLE STRUCTURE.
 - CONTRACTOR TO INSTALL JOINT SEALANT BETWEEN ALL STRUCTURE SECTIONS AND ASSEMBLE STRUCTURE.
 - CONTRACTOR TO PROVIDE, INSTALL, AND GROUT INLET AND OUTLET PIPE(S). MATCH PIPE INVERTS WITH ELEVATIONS SHOWN. ALL PIPE CENTERLINES TO MATCH PIPE OPENING CENTERLINES.
 - CONTRACTOR TO TAKE APPROPRIATE MEASURES TO ASSURE UNIT IS WATER TIGHT, HOLDING WATER TO FLOWLINE INVERT MINIMUM. IT IS SUGGESTED THAT ALL JOINTS BELOW PIPE INVERTS ARE GROUTED.

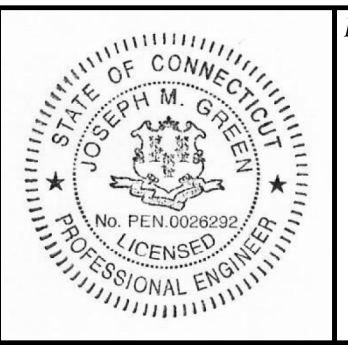
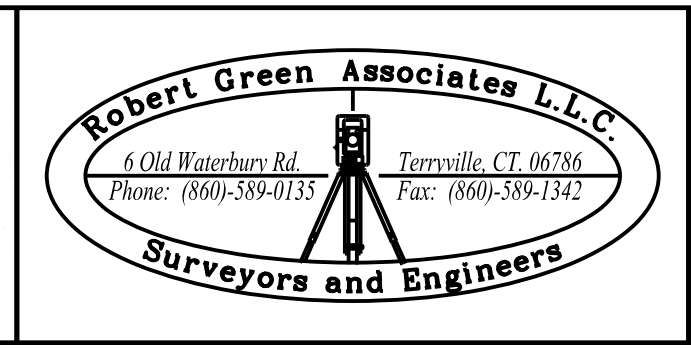
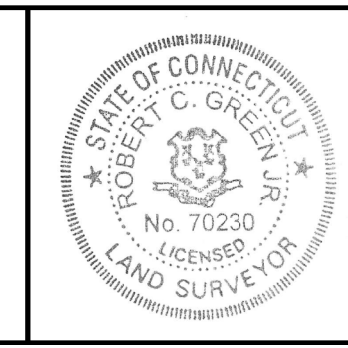
CONTECH
ENGINEERED SOLUTIONS LLC
www.contechES.com
9025 Centre Pointe Dr., Suite 400, West Chester, OH 45069
800-338-1122 513-645-7000 513-645-7993 FAX

CDS1515-3-C
ONLINE CDS
STANDARD DETAIL

REV.	DATE	REVISION DESCRIPTION

DATE:
JANUARY 26, 2022

SURVEYOR SIGNATURE/BLOCK:
TO MY KNOWLEDGE AND BELIEF, THIS MAP IS SUBSTANTIALLY CORRECT AS NOTED HEREON.
RAH CSH



ENGINEER SIGNATURE/BLOCK:
Joseph M. Green

PROJECT TITLE:
**SITE PLAN
"HOUSE OF WORSHIP"
ASSESSORS MAP 2030, LOT'S 175 & 176
330-336 WELTON STREET
HAMDEN, CONNECTICUT**

OWNER:
UJARO DEEPA.ORG

DRAWING TITLE:
MISCELLANEOUS NOTES & DETAILS

DRAWING NO.
MISC-003

SHEET NO.
11