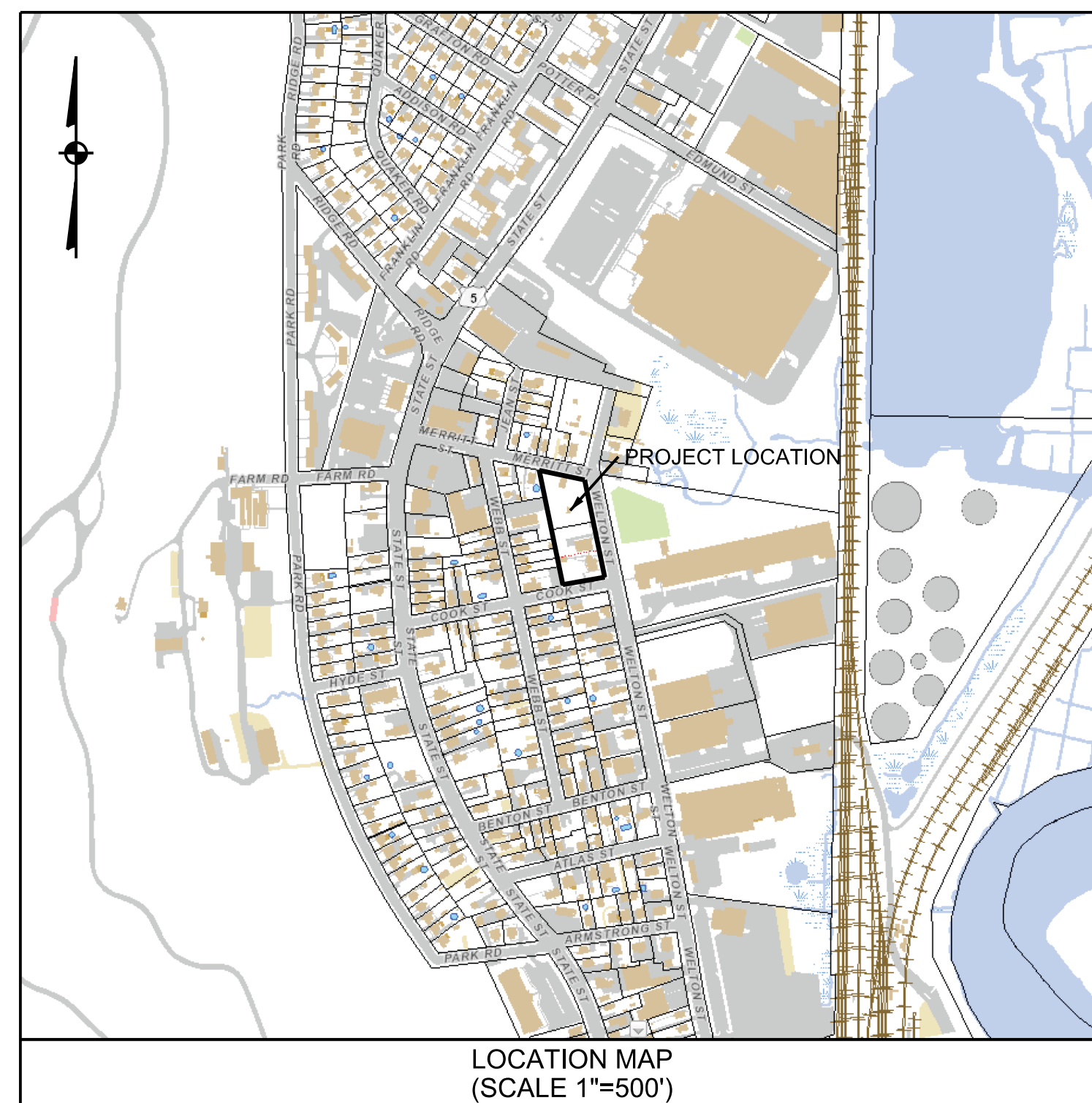


SITE PLAN "HOUSE OF WORSHIP"

ASSESSORS MAP 2030, LOT'S 175&176
330-336 WELTON STREET
HAMDEN, CONNECTICUT
JANUARY 26, 2022



LIST OF REVISIONS		
REV.	DATE	REVISION DESCRIPTION

LEGEND	
	NORTH ARROW
	UTILITY POLE
	UTILITY POLE W/ LUMINAIRE
	MANHOLE
	CATCH BASIN
	SIGN
	GATE VALVE (TYPE AS NOTED)
	HYDRANT
	DECIDUOUS TREE
	EVERGREEN TREE
	SHRUB / BUSH
	EXISTING SPOT ELEVATION
	PROPOSED SPOT ELEVATION
	CURBING (TYPE AS NOTED)
	ZONING SETBACK LINE
	EXISTING CONTOUR
	PROPOSED CONTOUR
	APPROX. LOCATION EXISTING SEWER MAIN
	APPROX. LOCATION EXISTING WATER MAIN
	APPROX. LOCATION EXISTING GAS MAIN
	PROPOSED ROOF LEADER CONNECTION
	SEDIMENTATION AND EROSION CONTROL FENCE
	WHITE PAINTED PAVEMENT ARROW

LIST OF DRAWINGS

1	COVER SHEET
2	PROPERTY & TOPOGRAPHIC SURVEY
3	GENERAL NOTES
4	SITE REMOVALS PLAN
5	LAYOUT, SIGNS AND PAVEMENT MARKINGS PLAN
6	DRAINAGE AND UTILITIES PLAN
7	GRADING PLAN
8	EROSION AND SEDIMENTATION CONTROL PLAN
9-12	MISCELLANEOUS NOTES AND DETAILS

Owner:
Ujaro Deepa.Org

Applicant:
Manmohan Bharara
860-983-1219

Surveyor/Civil Engineer:
Robert Green Associates LLC
6 Old Waterbury Road
Terryville, CT 06786
(860) 589-0135