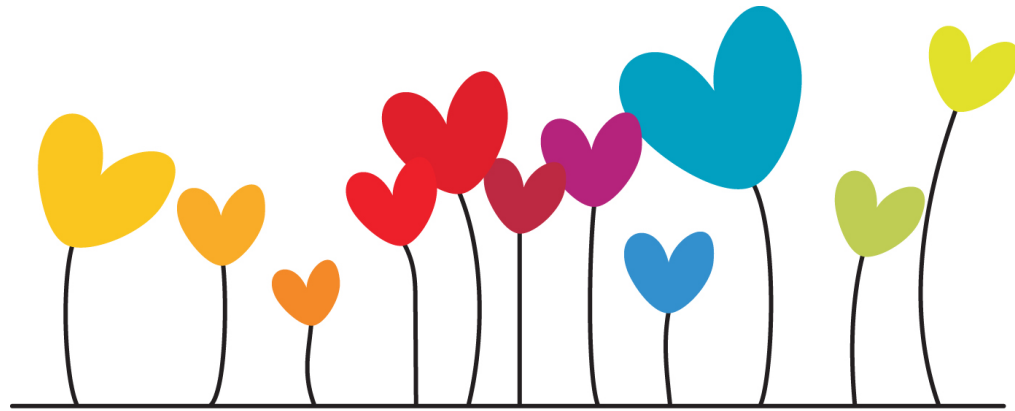


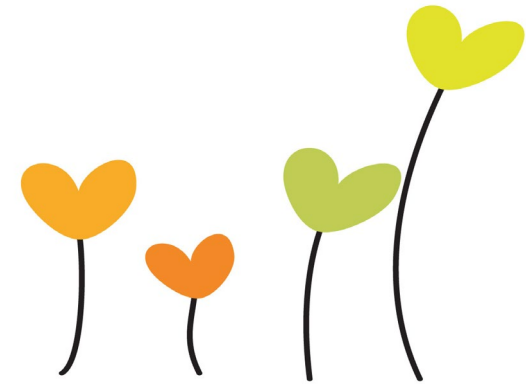
Presentation by
Sheryl Sadinsky,
Coordinator
Hamden's
Partnership for
Young Children



Hamden's Partnership for Young Children

A collaborative that includes public and private agencies, community members, parents, representatives from the town and the Hamden Public Schools who advocate for Hamden's young children. Our focus is improving the education, care, health, safety and development of children from birth to age nine.

— Hamden's Partnership for Young Children



SUPPORT, EDUCATE and LEARN FROM

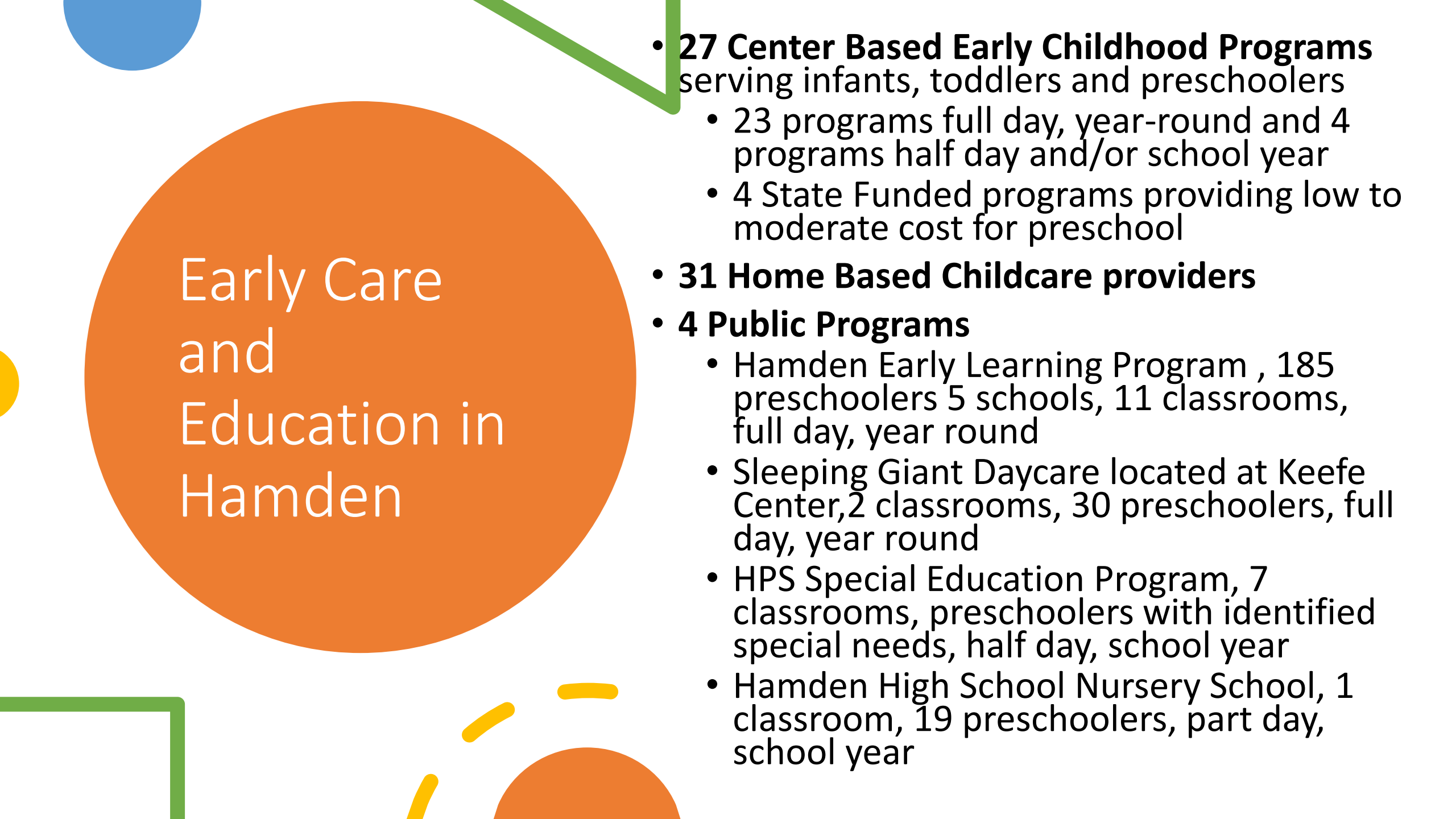
- Hamden families with children birth through early elementary school
- Hamden's Center-based and Home-based childcare

PARTNER WITH

- Public and Private Organizations focused on improving child and family outcomes
- Hamden Family Resource Center to educate and support parents of young children
- Hamden Public Schools by ensuring more Hamden children have preschool experience and assisting with transition to kindergarten
- Hamden Preschool Special Education Staff to help meet the needs of children with special needs

MANAGE

- multiple grants including the School Readiness grant (\$843,318.00) and support the sub-grantees



Early Care and Education in Hamden

- **27 Center Based Early Childhood Programs** serving infants, toddlers and preschoolers
 - 23 programs full day, year-round and 4 programs half day and/or school year
 - 4 State Funded programs providing low to moderate cost for preschool
- **31 Home Based Childcare providers**
- **4 Public Programs**
 - Hamden Early Learning Program , 185 preschoolers 5 schools, 11 classrooms, full day, year round
 - Sleeping Giant Daycare located at Keefe Center, 2 classrooms, 30 preschoolers, full day, year round
 - HPS Special Education Program, 7 classrooms, preschoolers with identified special needs, half day, school year
 - Hamden High School Nursery School, 1 classroom, 19 preschoolers, part day, school year

Impact of Covid 19 on Hamden's Children and Families



- Increased racial and ethnic inequities for parents, children, and educators
- Negative impact on children's mental and physical health
- Increased inequities regarding education for young children with special needs
- Negative impact on development of personal social skills, including communication, and social emotional growth
- Increase in challenging behavior in childcare and lower elementary grades
- Negative impacts on small businesses, minority businesses and job security
- Decrease in parents' ability to afford quality care

This pandemic has exposed the critical role which childcare providers play not only in the lives of children, contributing to their learning and development, but also toward maintaining a thriving economy which is vital to our country.

ARPA Proposal

Support Needed for Children ages 2-5 with Special Needs and Challenging Behavior in Hamden's Childcare Centers.
\$405,000

- Hire Behavioral support consultants for center-based childcare
- Hire ed consultant , health and safety consultant for Home Childcare
- Train Hamden childcare staff in PMT

Financial Support to Center-Based and Home-Based Childcare.
\$165,500

- Yearly stipends for CPR training and cleaning supplies
- Purchase outdoor equipment for centers and homes
- Increase Internet access where needed (home-based)

Need to Expand Community Support for Parents, other Caregivers, and their children.
\$335,000

- Add public, interactive, educational experiences and spaces for young families at bus stops and around town



Handouts



Letter



ARPA funds proposal



Testimonials from Hamden Center-Based
Childcare and Family-based Childcare



Hamden's Partnership
for Young Children

Structure
Funding
Focus